

1124 Bedford Avenue

Bedford-Stuyvesant

Retail for Lease
1,380 SF + Lower Level



SUMMARY

Discover an exceptional retail opportunity in the heart of Bed-Stuy on a bustling stretch of Bedford Ave. This dual-level space sits at the base of a brand-new luxury condominium, ensuring a built-in customer base and prime visibility.

HIGHLIGHTS

- Abundant natural light
- 37 feet of frontage
- High ceilings
- Bathroom

LEASABLE AREA

1,380 SF Ground Floor
1,420 SF Lower Level

CEILING HEIGHTS

14 feet Ground Floor
10 feet Lower Level

CROSS STREETS

Gates Ave & Quincy St

PRICING & TERMS

Available upon request

AVAILABILITY

Immediate

TRANSPORTATION



NEARBY TENANTS



For more information, contact exclusive agents:

Peter Schubert
Managing Director
pschubert@terraccrg.com

Darlene Lee
Associate
dlee@terraccrg.com

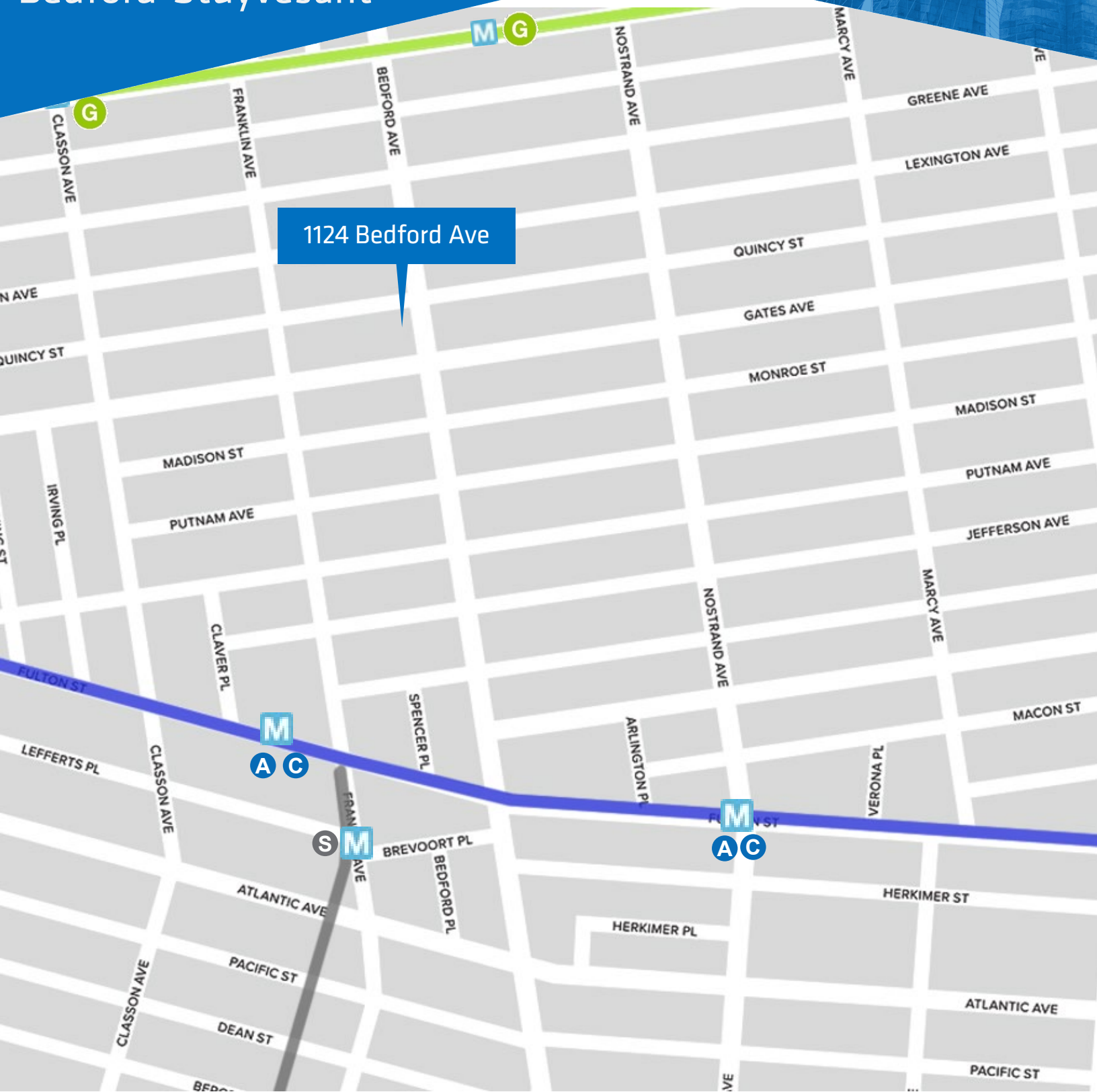
(718) 768-7788

terraccrg.com

1124 Bedford Avenue

Bedford-Stuyvesant

Retail for Lease
1,380 SF + Lower Level



1124 Bedford Ave



For more information, contact exclusive agents:

Peter Schubert
Managing Director
pschubert@terraarg.com

Darlene Lee
Associate
dlee@terraarg.com

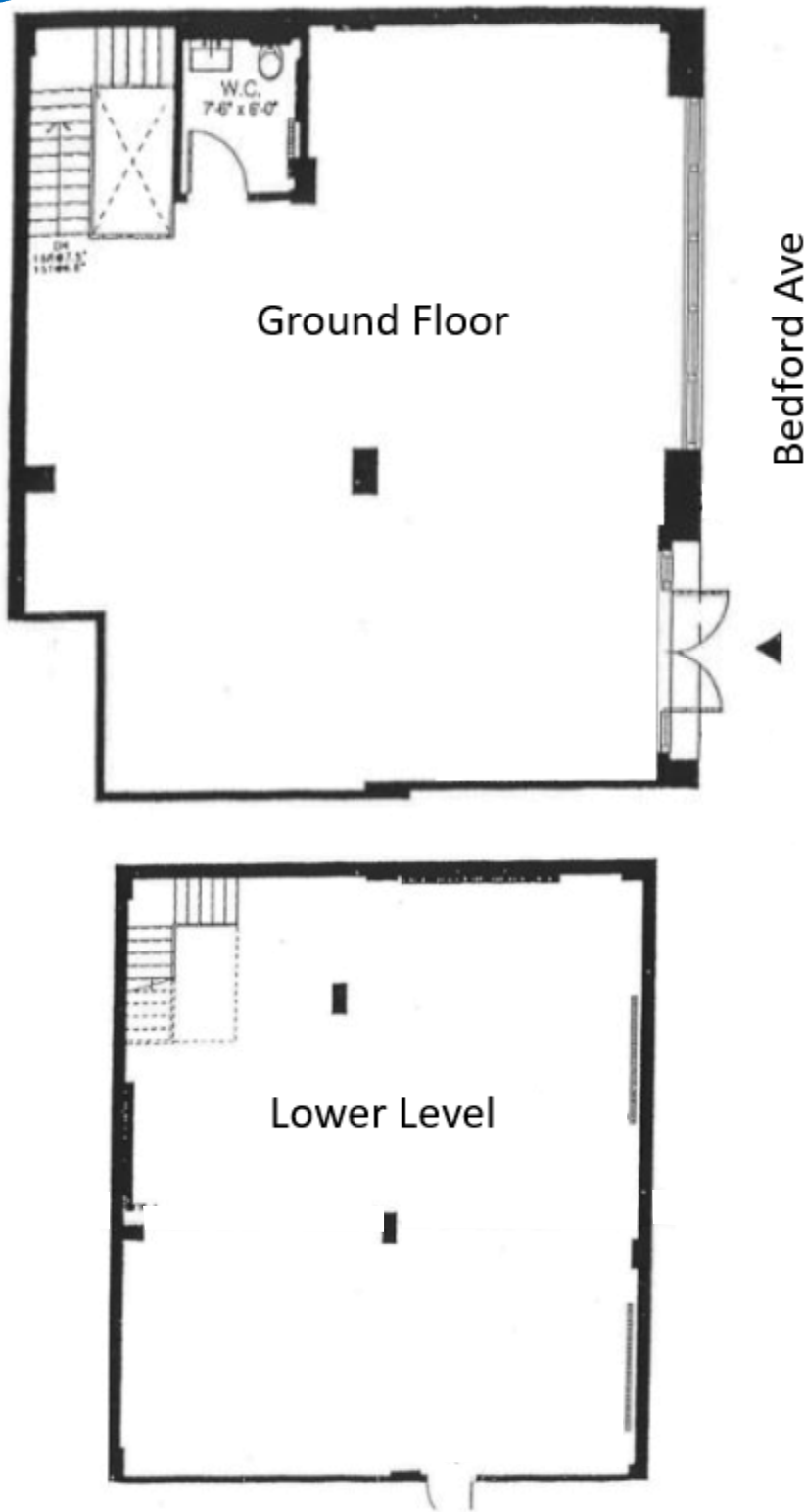
(718) 768-7788

terraarg.com

1124 Bedford Avenue

Bedford-Stuyvesant

Retail for Lease
1,380 SF + Lower Level



For more information, contact exclusive agents:

Peter Schubert
Managing Director
pschubert@terracrg.com

Darlene Lee
Associate
dlee@terracrg.com

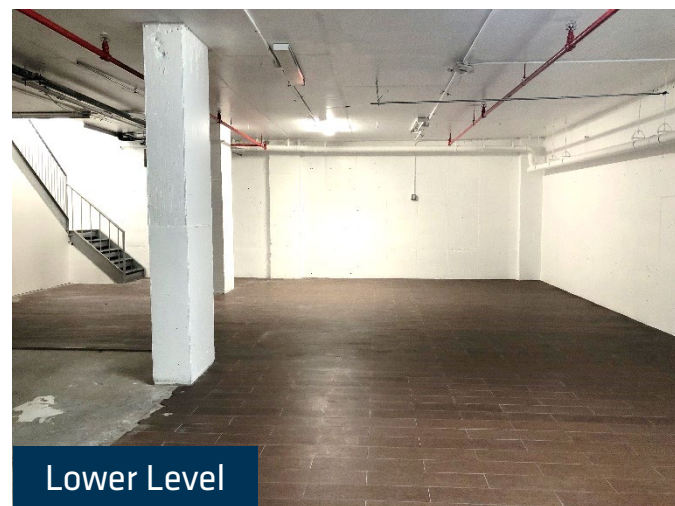
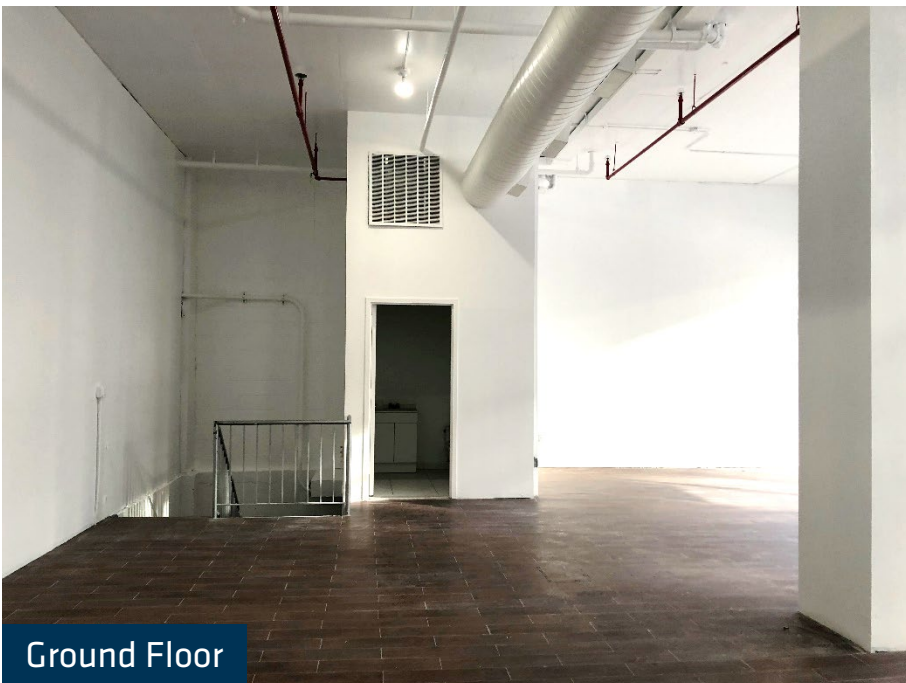
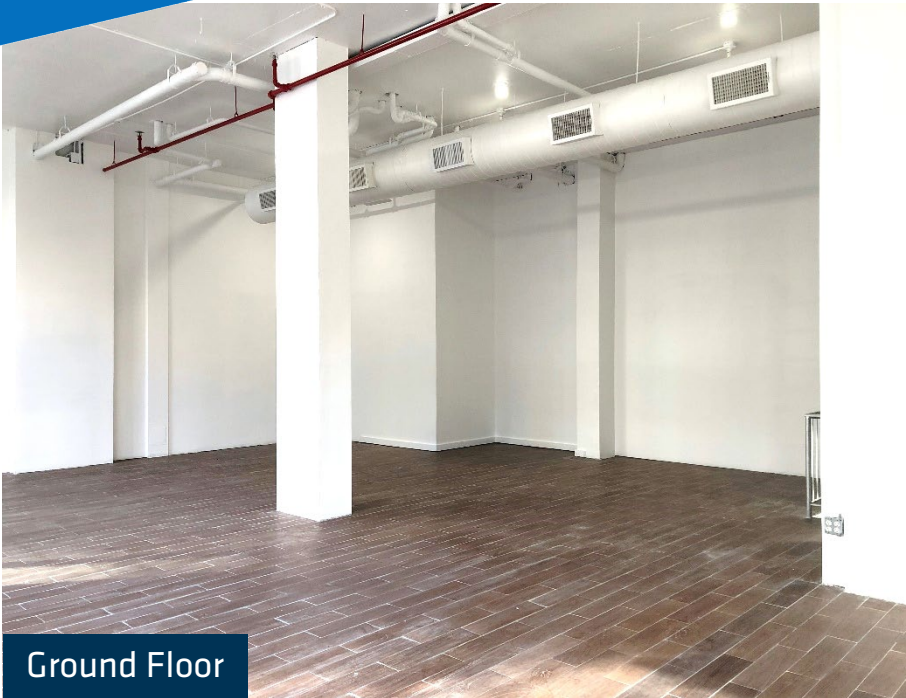
(718) 768-7788

terracrg.com

1124 Bedford Avenue

Bedford-Stuyvesant

Retail for Lease
1,380 SF + Lower Level



For more information, contact exclusive agents:

Peter Schubert
Managing Director
pschubert@terracrg.com

Darlene Lee
Associate
dlee@terracrg.com

(718) 768-7788

terracrg.com