

1195 Bedford Avenue

Bedford-Stuyvesant

Retail for Lease
1,300 SF
Divisible



SUMMARY

A prime opportunity to take possession of an expansive and bright retail space that can operate as a full-service restaurant, art studio, café, or community hub.

HIGHLIGHTS

- Abundant natural light
- 2 bathrooms
- Large lower-level storage space
- Proximity to transportation
- 41 feet of total frontage
- High foot-traffic

LEASABLE AREA

1,300 SF Ground Floor
575 SF Lower Level

CEILING HEIGHTS

11-12 feet

CROSS STREETS

Hancock St and Jefferson Ave

PRICING & TERMS

Available upon request

AVAILABILITY

Immediate

TRANSPORTATION

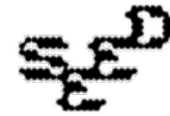


NEARBY TENANTS

BREUKLYN
Tequila & Taco Bar



URSULA
NEW MEXICAN INSPIRED CAFE & BAKERY



GOLDA



For more information, contact exclusive agents:

Peter Schubert
Managing Director
pschubert@terraccrg.com

Darlene Lee
Associate
dlee@terraccrg.com

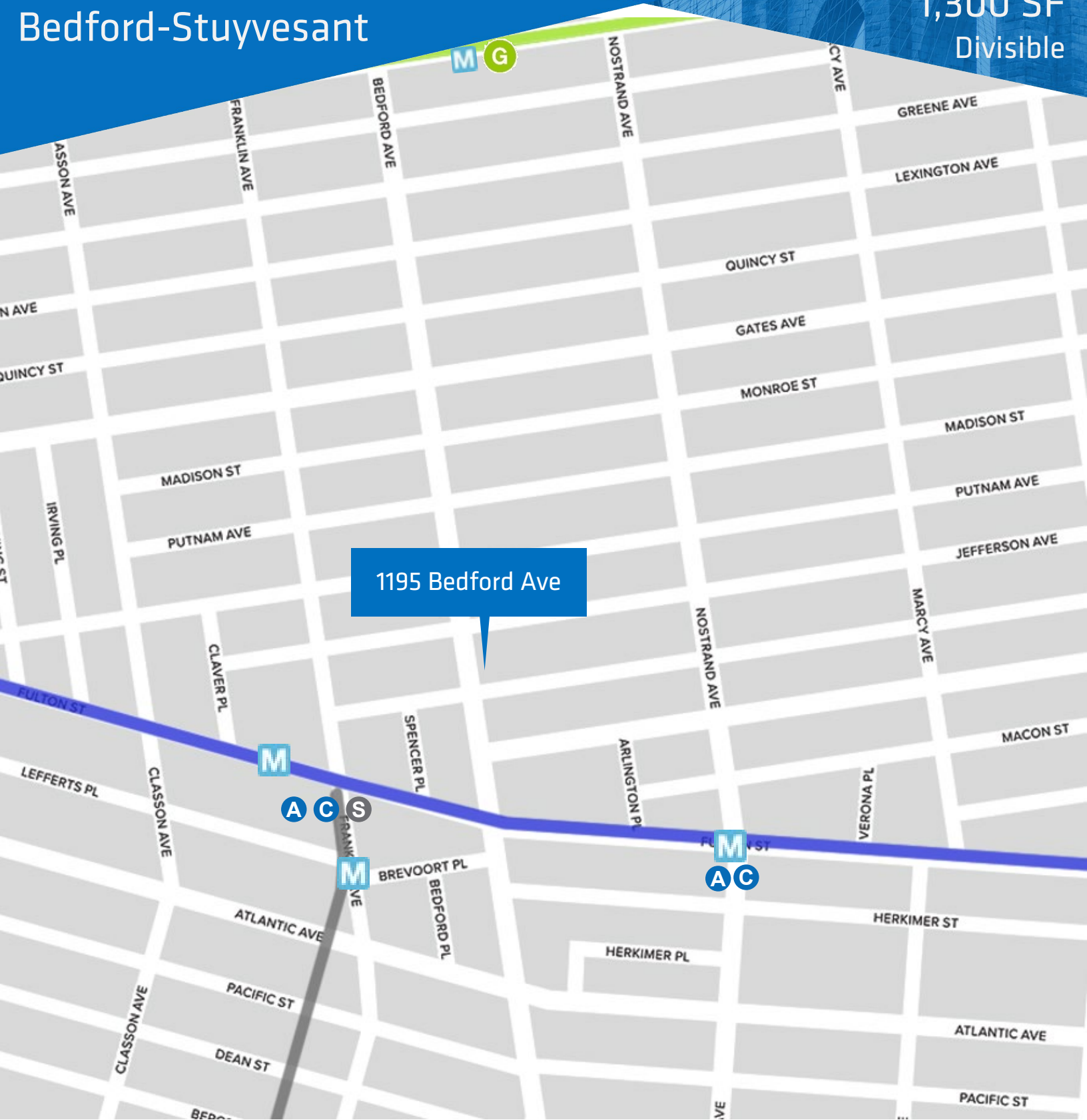
Maia Barnett
Associate
mbarnett@terraccrg.com

(718) 768-7788
terraccrg.com

1195 Bedford Avenue

Bedford-Stuyvesant

Retail for Lease
1,300 SF
Divisible



1195 Bedford Ave

M

A

C

S

M

M

A

C



For more information, contact exclusive agents:

Peter Schubert
Managing Director
pschubert@terraccrg.com

Darlene Lee
Associate
dlee@terraccrg.com

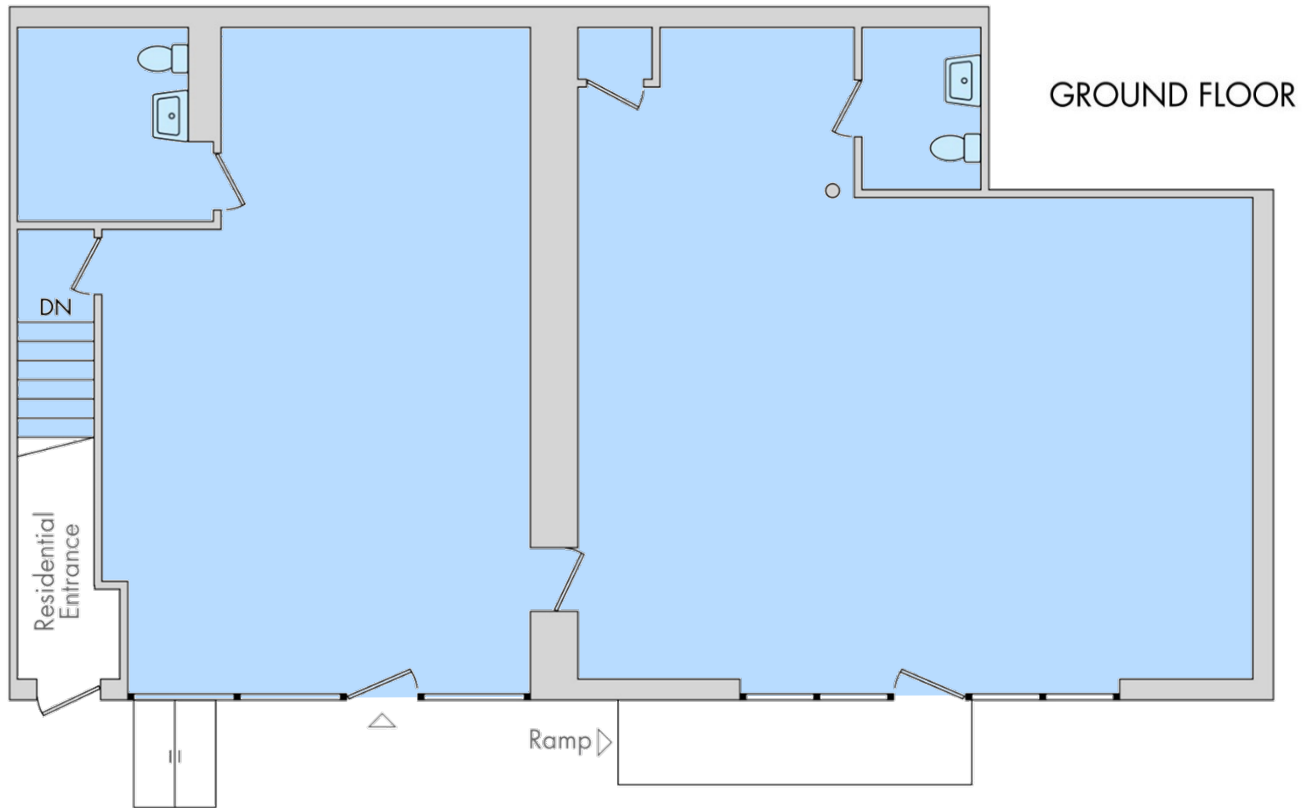
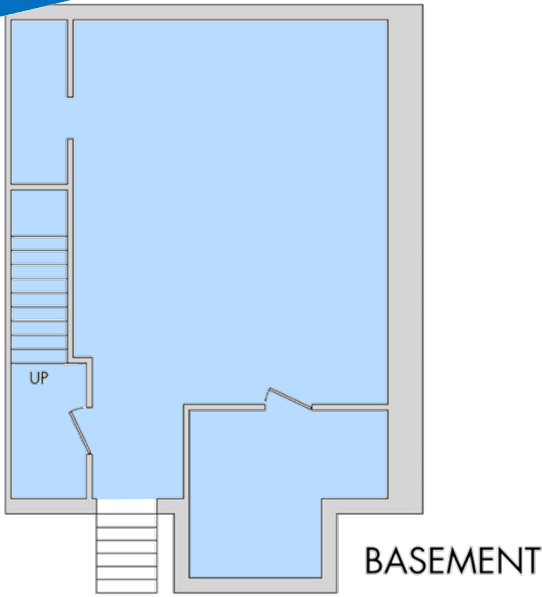
Maia Barnett
Associate
mbarnett@terraccrg.com

(718) 768-7788
terraccrg.com

1195 Bedford Avenue

Bedford-Stuyvesant

Retail for Lease
1,300 SF
Divisible



For more information, contact exclusive agents:

Peter Schubert
Managing Director
pschubert@terracrgr.com

Darlene Lee
Associate
dlee@terracrgr.com

Maia Barnett
Associate
mbarnett@terracrgr.com

(718) 768-7788
terracrgr.com

1195 Bedford Avenue

Bedford-Stuyvesant

Retail for Lease
1,300 SF
Divisible



For more information, contact exclusive agents:

Peter Schubert
Managing Director
pschubert@terraccrg.com

Darlene Lee
Associate
dlee@terraccrg.com

Maia Barnett
Associate
mbarnett@terraccrg.com

(718) 768-7788
terraccrg.com