



**TERRACRG**  
COMMERCIAL REALTY GROUP

**15,000 SF THEATRE FOR LEASE**  
**FLATBUSH, BROOKLYN**



# HIGHLIGHTS

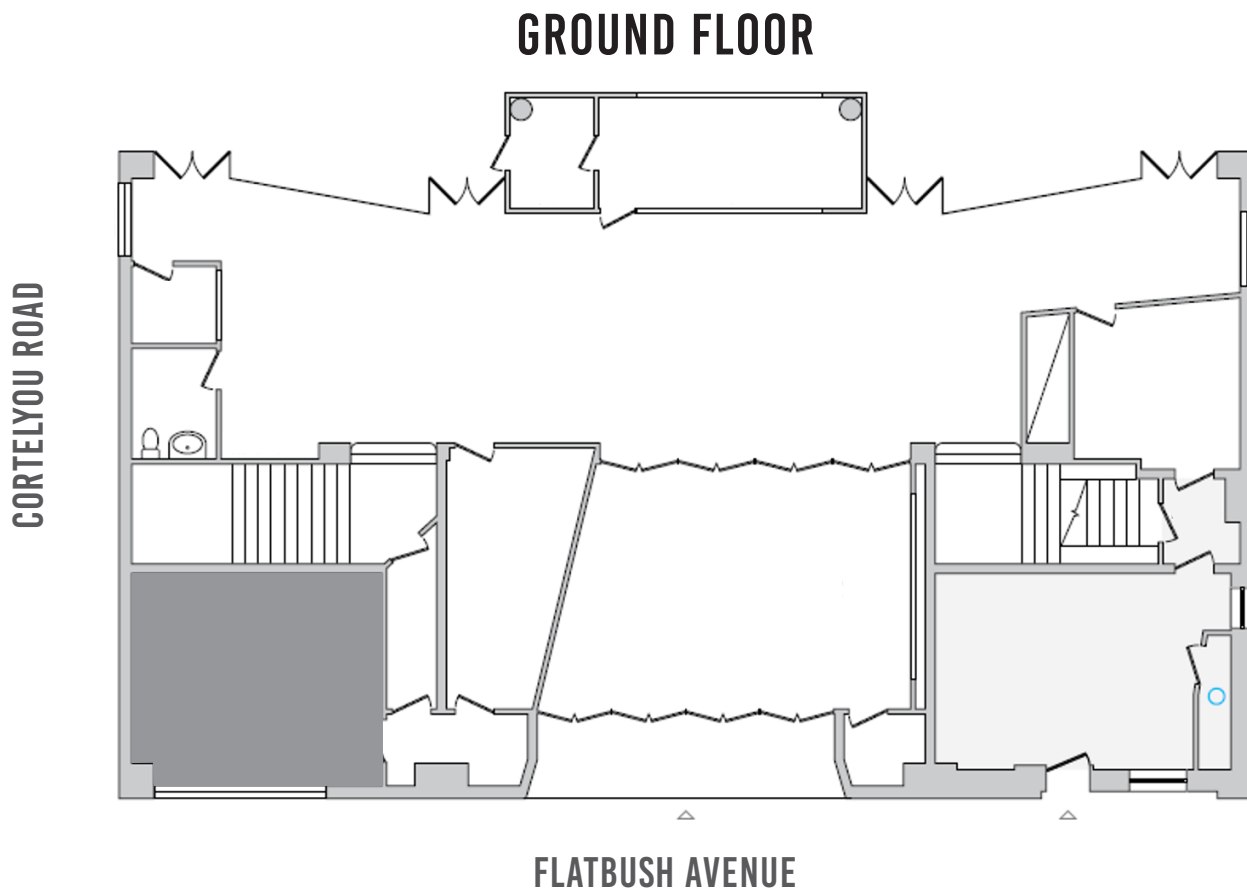
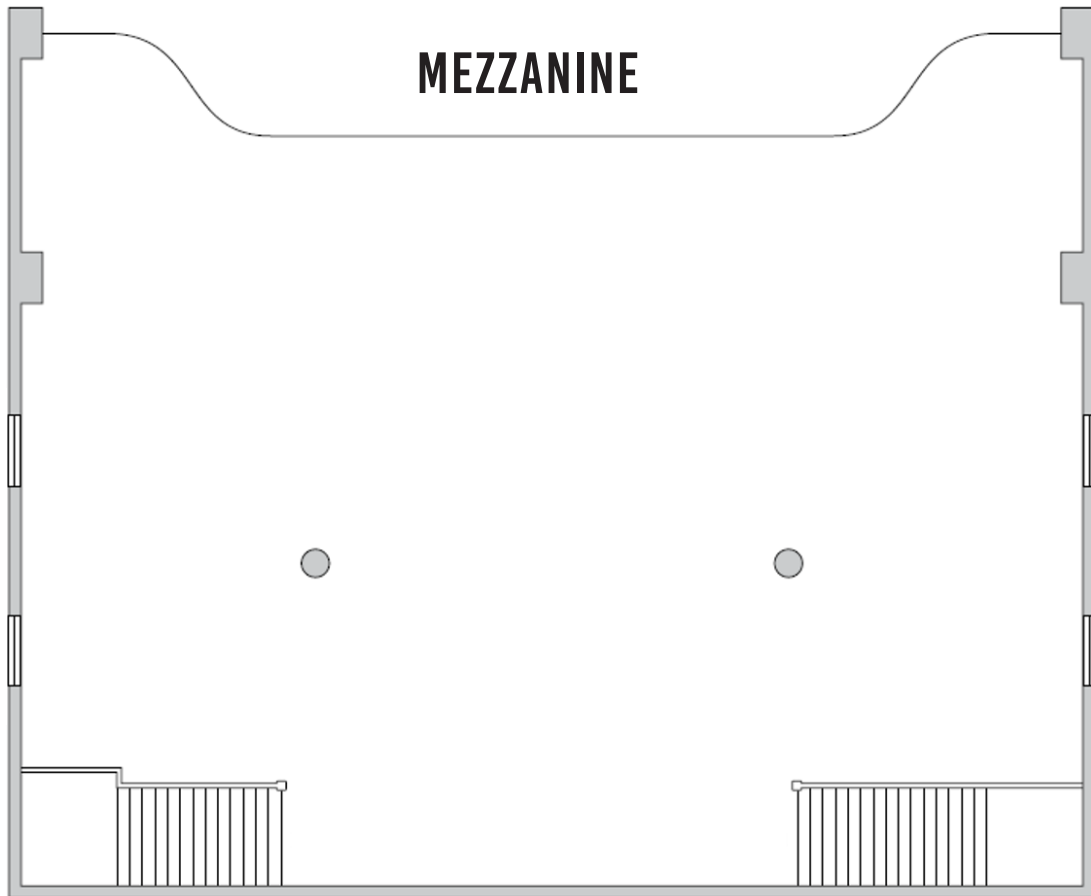
- 4,000 SF MEZZANINE
- PRIVATE MEZZANINE OFFICES
- GROUND & SECOND LEVEL RESTROOMS
- HIDDEN BAPTISMAL POOL UNDER STAGE
- FUNCTIONAL TECH BOOTH



# FLOOR PLAN



**TERRACRG**  
COMMERCIAL REALTY GROUP







# RIALTO THEATRE

The Rialto Theater, opened in 1916, is one of the first luxury movie palaces developed by A.H. Schwartz, founder of Century Circuit Theaters. Situated in the heart of Flatbush, Brooklyn on the corner of Flatbush Avenue and Cortelyou Road, the venue boasts 35-foot ceilings, a hidden baptismal pool, ground

and second floor bathrooms and offices with approximately 1,400 seats per the C/O. This single-screen theatre had its success during the era of silent movies, those of which were accompanied by a small orchestra and organist who played during intermission. The Rialto Theatre officially closed in 1976 and was then sold to an evangelical church in 1977. Rialto Theatre is in operable condition with maintained aspects from the initial construction in 1916.



**1,400 SEAT CAPACITY PER CERT OF OCCUPANCY**



**IDEAL LOCATION IN THE THEATRE DISTRICT OF  
FLATBUSH, BROOKLYN**

**PROXIMITY TO TRANSIT**



**CORTELYOU ROAD**  
0.4 Mile Distance



**BEVERLEY ROAD**  
0.4 Mile Distance



**CLOSE PROXIMITY TO PROSPECT PARK**



**TERRACRG**  
COMMERCIAL REALTY GROUP

**718.768.7788 | TERRACRG.COM**

**PETER SCHUBERT**  
PSCHUBERT@TERRACRG.COM

**ABBIE CHENG**  
ACHENG@TERRACRG.COM

**GEORGE HEWITT**  
GHEWITT@TERRACRG.COM