

196 SEVENTH AVE

Park Slope

RETAIL FOR LEASE

1,200 SF



SUMMARY

This former boutique sits on Park Slope's premier retail corridor, with co-tenants that include Blue Bottle Coffee, Chipotle, Juice Press, Katsuei, and Hungry Ghost. With high ceilings, a rear yard, and a lower level, this space is ideal for a café, bakery, or retail boutique.

The site is located within one of Brooklyn's most coveted residential neighborhoods and is steps from PS 321, one of the city's most well-regarded primary schools.

HIGHLIGHTS

- High traffic location
- Strong co-tenancy
- Exceptional transportation
- Central air conditioning
- Small rear yard
- Full lower-level storage

LEASABLE AREA

1,200 SF
+ lower level
+ rear yard

CEILING HEIGHTS

12 Feet

CROSS STREETS

2nd & 3rd Streets

PRICING & TERMS

Upon request

AVAILABILITY

Immediate

TRANSPORTATION

2 3 B Q

NEIGHBORING TENANTS



BLUE BOTTLE COFFEE



HUNGRY GHOST COFFEE



LOCAL BAREBURGER

just salad



For more information, contact exclusive agents:

Peter Schubert
Managing Director
pschubert@terracr.com

Abbie Cheng
Associate
acheng@terracr.com

George Hewitt
Associate
ghewitt@terracr.com

(718) 768-7788
terracr.com

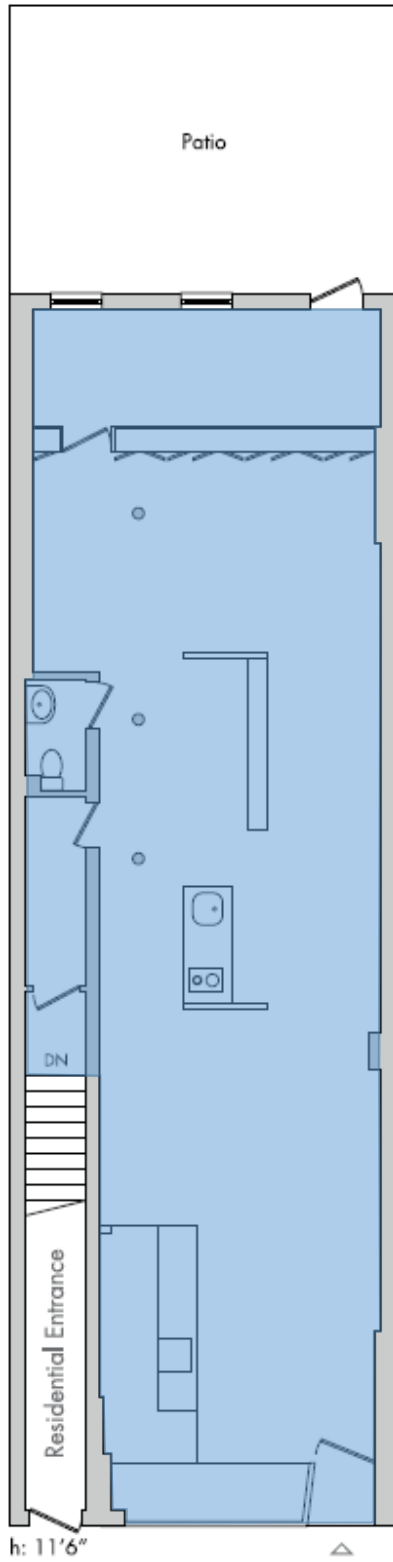
196 SEVENTH AVE

Park Slope

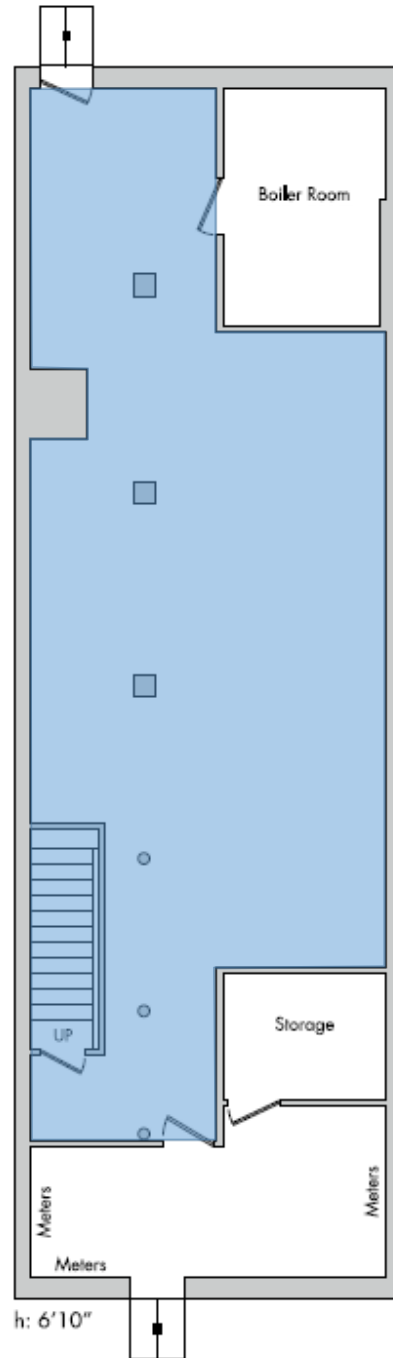
RETAIL FOR LEASE

1,200 SF

Ground Level



Lower Level



For more information, contact exclusive agents:

Peter Schubert
Managing Director
pschubert@terraccrg.com

Abbie Cheng
Associate
acheng@terraccrg.com

George Hewitt
Associate
ghewitt@terraccrg.com

(718) 768-7788
terraccrg.com