

147 Lewis Avenue

Bedford-Stuyvesant

Retail for Lease
750 SF



SUMMARY

This single-story retail space was formerly a casual restaurant that can be delivered with venting. The space has generous frontage and a wide sidewalk for the potential to serve outdoors. The existing infrastructure supports quick service retail or grab-and-go food uses that need vented space. There is an attractive ceiling height and back of house space for prep and storage. This location is attractive for the combination of steady northerly traffic and easy access from transportation on Broadway, with good residential density.

LEASABLE AREA

750 SF ground floor

CEILING HEIGHTS

12 ft

CROSS STREETS

Between Kosciuszko St & Lafayette Ave

PRICING & TERMS

Upon request

AVAILABILITY

Immediate

TRANSPORTATION



NEARBY TENANTS



PEACHES



For more information, contact
exclusive agents:

(718) 768-7788

Peter Schubert
pschubert@terracrgr.com

Abbie Cheng
acheng@terracrgr.com

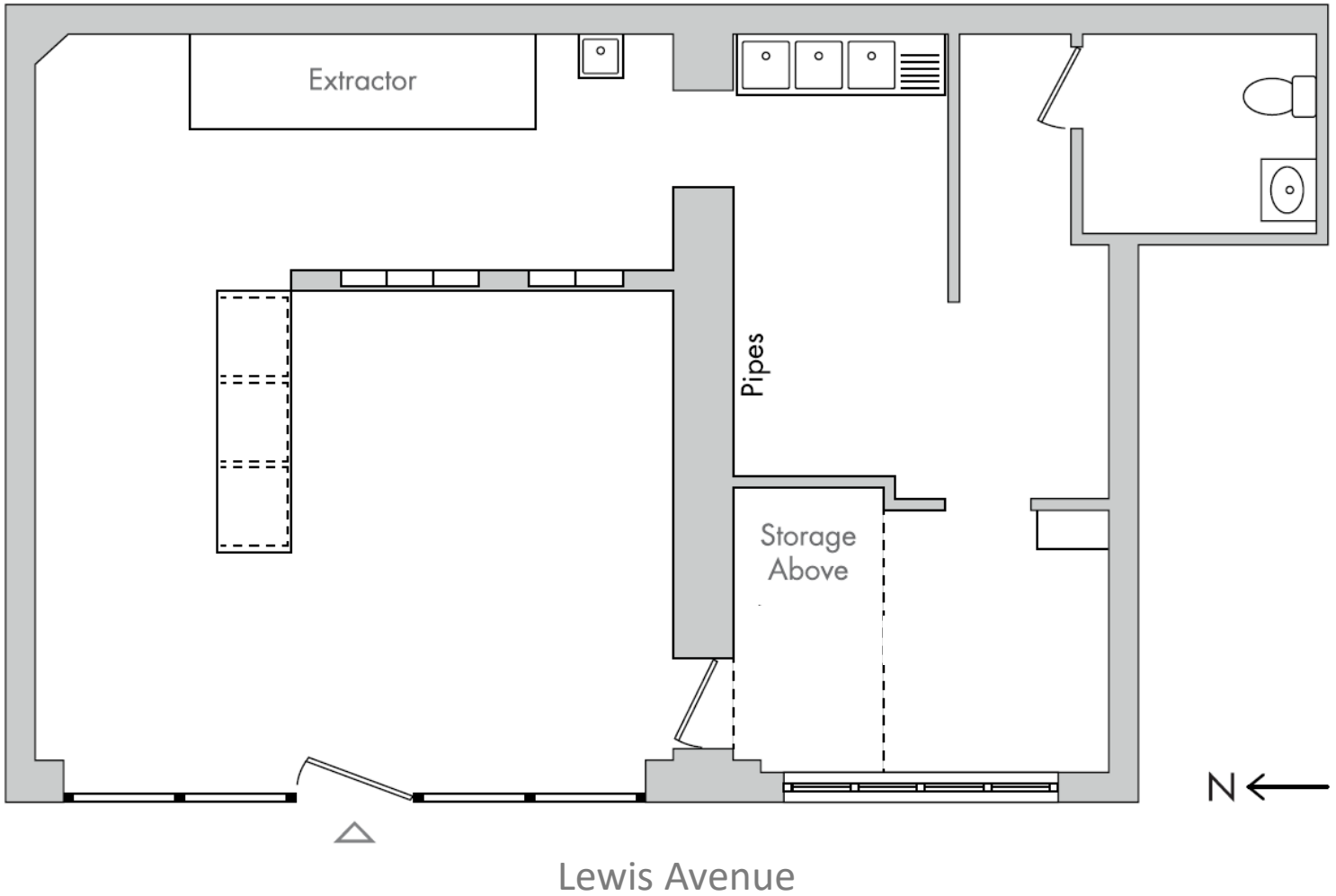
Bill Strassman
wstrassman@terracrgr.com

George Hewitt
ghewitt@terracrgr.com

147 Lewis Avenue

Bedford-Stuyvesant

Retail for Lease
750 SF



The information provided herein has either been given to us by the owner of the property or was obtained from sources we deem reliable. We do not guarantee the accuracy of any information. All zoning, existing square feet of buildings, available buildable square feet, permitted uses and any other information provided herein must be independently verified. The value of any real estate investment is dependent upon a variety of factors including income, vacancy rates, expense estimates, tax brackets and general market assumptions, all of which should be evaluated by your tax advisor and/or legal counsel. Prospective buyer and tenants should carefully verify each item of information herein.



For more information, contact
exclusive agents:

(718) 768-7788

Peter Schubert
pschubert@terraccrg.com

Abbie Cheng
acheng@terraccrg.com

Bill Strassman
wstrassman@terraccrg.com

George Hewitt
ghewitt@terraccrg.com