

# 66 WILLOUGHBY ST

DOWNTOWN BROOKLYN

2,200 RSF | \$32/RSF  
FOR LEASE



OPEN FLOORPLAN

## NEIGHBORHOOD

Downtown Brooklyn

## CROSS STREETS

Lawrence and Bridge Streets

## HIGHLIGHTS

- Prime Downtown Location
- Low Loss Factor
- Open Floor Plan
- Signage Opportunity
- 2 Private Bathrooms
- Large Windows
- Hardwood Floors

## NEIGHBORING TENANTS

**Gimlet** arkmedia



Databud  
Health

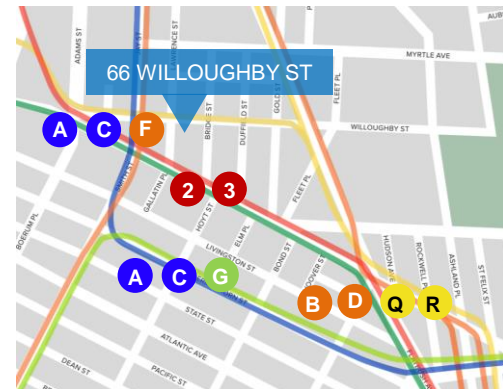
## NEIGHBORING RETAIL TENANTS

**CITYPOINT**



CIRCA  
BREWING  
CO

## TRANSPORTATION



2 blocks to **A C F**  
2 blocks to **2 3**

B25, B26, B38, B52 Bus



**TERRACRG**  
COMMERCIAL REALTY GROUP

For more information, contact exclusive agents:

**Jackson O'Neill**  
Associate, Office Leasing  
joneill@terraarg.com  
412-208-5869

**Christopher Havens**  
Managing Director, Office Leasing  
chavens@terraarg.com  
718-489-0077

# 66 WILLOUGHBY ST

DOWNTOWN BROOKLYN

2,200 RSF | \$32/RSF  
FOR LEASE



HARDWOOD FLOORS



TWO PRIVATE BATHROOMS



**TERRACRG**  
COMMERCIAL REALTY GROUP

For more information, contact exclusive agents:

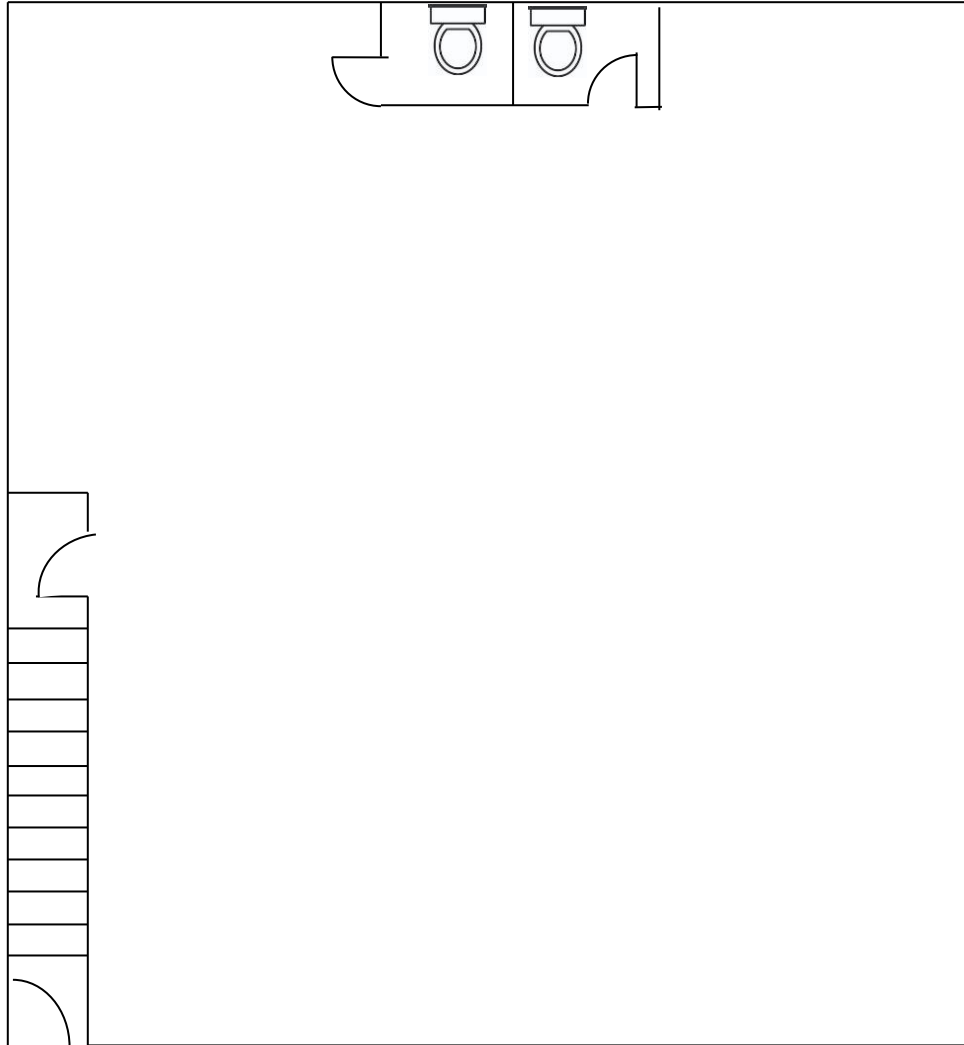
**Jackson O'Neil**  
Associate, Office Leasing  
joneill@terraarg.com  
412-208-5869

**Christopher Havens**  
Managing Director, Office Leasing  
chavens@terraarg.com  
718-489-0077

# 66 WILLOUGHBY ST

DOWNTOWN BROOKLYN

2,200 RSF | \$32/RSF  
FOR LEASE



Willoughby Street Entrance

While every attempt is made to ensure accuracy, this floor plan is for guidance only. The measurements, dimensions, specifications, and other data shown are approximate and may not be to scale. We assume no responsibility for the accuracy of this floor plan or for any action taken in reliance thereon. This floor plan does not create any representation, warranty or contract. All parties should consult a professional, such as an architect, to verify the information contained herein.



For more information, contact exclusive agents:

**Jackson O'Neil**  
Associate, Office Leasing  
joneill@terraarg.com  
412-208-5869

**Christopher Havens**  
Managing Director, Office Leasing  
chavens@terraarg.com  
718-489-0077



# 66 WILLOUGHBY ST

DOWNTOWN BROOKLYN

2,200 RSF | \$32/RSF  
FOR LEASE



For more information, contact exclusive agents:

**Jackson O'Neill**  
Associate, Office Leasing  
joneill@terrarcg.com  
412-208-5869

**Christopher Havens**  
Managing Director, Office Leasing  
chavens@terrarcg.com  
718-489-0077

