

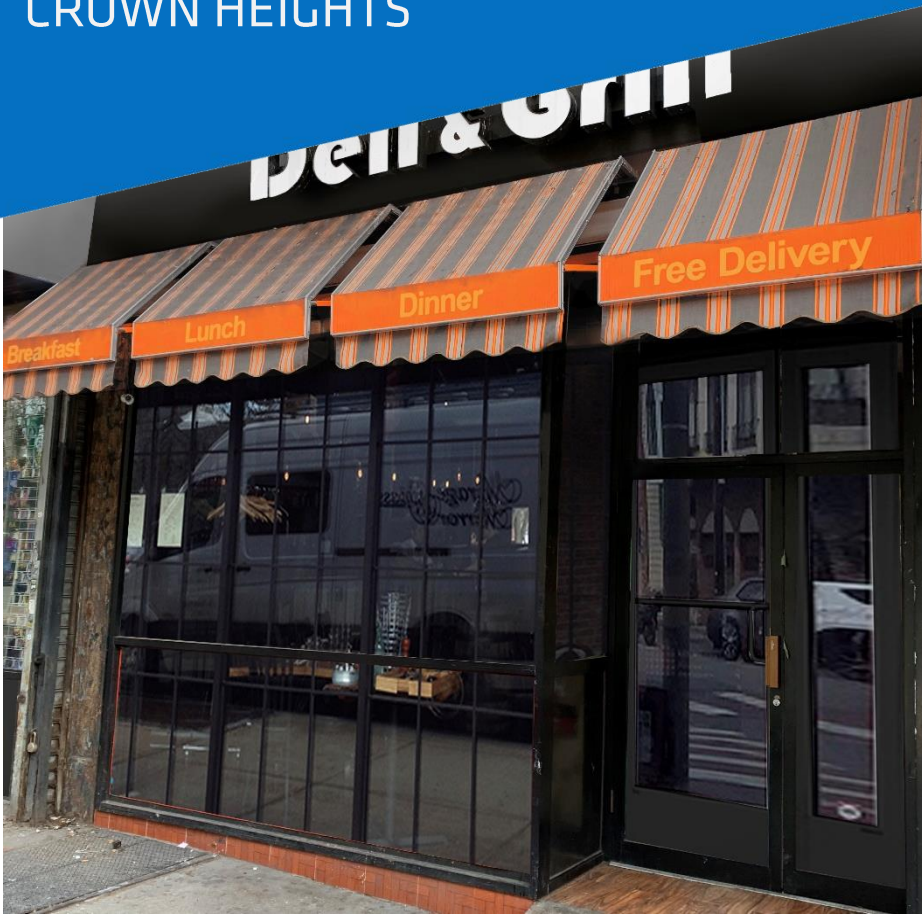
829 FRANKLIN AVE

CROWN HEIGHTS

Retail For Lease

720 SF

+ lower level



SUMMARY

829 Franklin Ave is a vented retail space located at one of Brooklyn's most dynamic dining and nightlife intersections. Join Butter & Scotch, Chavela's, Aita Trattoria, Glady's and Franklin Park among many others near the corner of Eastern PKWY.

The space is just steps to 2/3/4/5/S trains and has one existing bathroom and lower level storage. Ideal uses include pizza, café, juice, and other grab & go concepts.

LEASABLE AREA

720 SF ground level + lower level

CEILING HEIGHT

11-12 feet

FRONTAGE

20 feet

CROSS STREETS

Eastern PKWY & Union St

PRICING & TERMS

Competitive

AVAILABILITY

Arranged

TRANSPORTATION



NEIGHBORING TENANTS



BARBONCINO



For more information, contact exclusive agents:

Peter Schubert
Managing Director
pschubert@terracrg.com

Abbie Cheng
Leasing Associate
acheng@terracrg.com

Bill Strassman
Leasing Associate
wstrassman@terracrg.com

(718) 768-7788
terracrg.com

829 FRANKLIN AVE

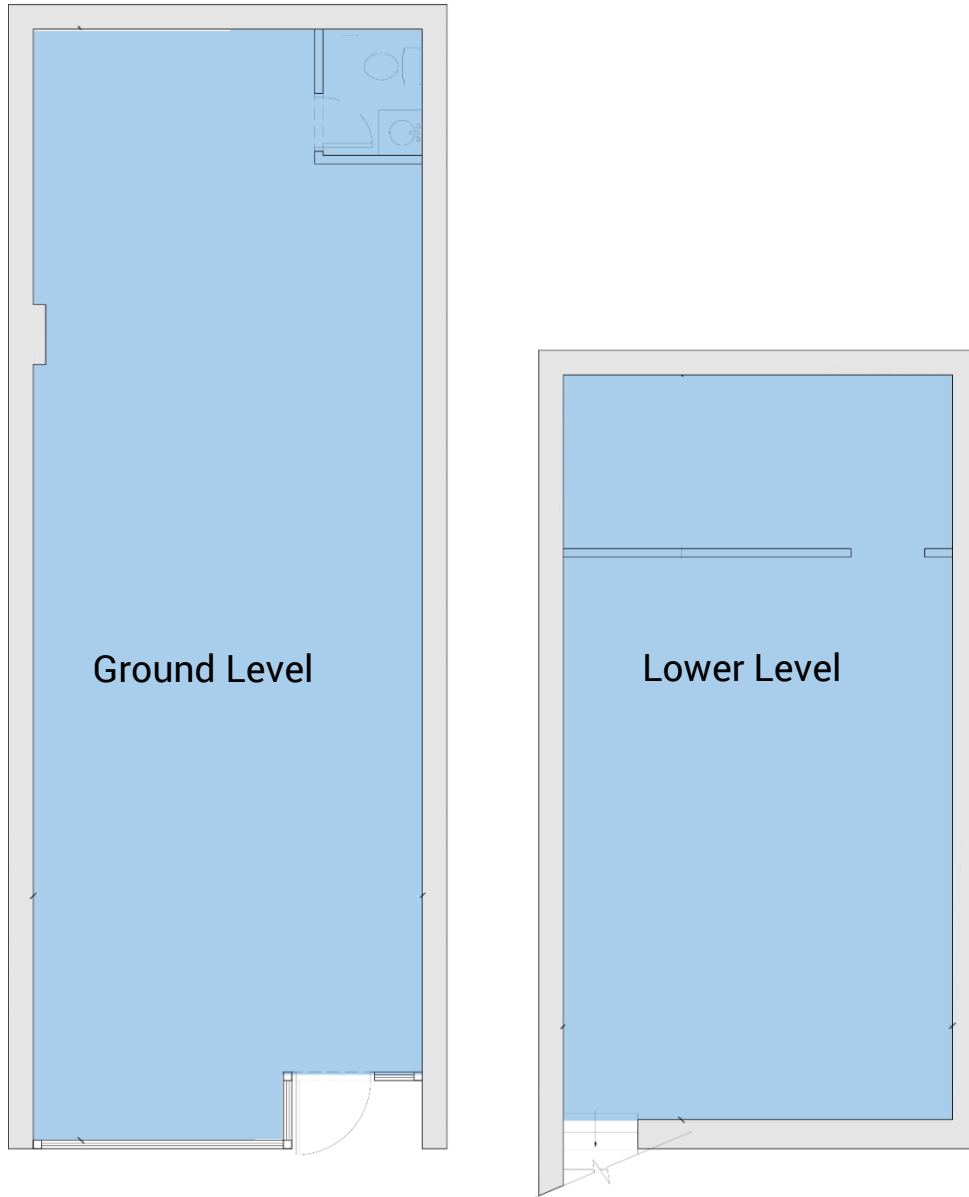
CROWN HEIGHTS

Retail For Lease

720 SF

+ lower level

FLOOR PLAN



Franklin Avenue

The information provided herein has either been given to us by the owner of the property or was obtained from sources we deem reliable. We do not guarantee the accuracy of any information. All zoning, existing square feet of buildings, available buildable square feet, permitted uses and any other information provided herein must be independently verified. The value of any real estate investment is dependent upon a variety of factors including income, vacancy rates, expense estimates, tax brackets and general market assumptions, all of which should be evaluated by your tax advisor and/or legal counsel. Prospective buyer and tenants should carefully verify each item of information herein.



For more information, contact exclusive agents:

Peter Schubert
Managing Director
pschubert@terracrg.com

Abbie Cheng
Leasing Associate
acheng@terracrg.com

Bill Strassman
Leasing Associate
wstrassman@terracrg.com

(718) 768-7788
terracrg.com