

143 SKILLMAN AVE

East Williamsburg

Community Facility For Lease
4,398 SF + roof-deck



SUMMARY

143 Skillman Avenue is a turn-key school located just off the exciting Graham Avenue retail corridor in East Williamsburg.

The space is fully sprinklered, contains ten existing classrooms and has access to a legal roof-deck. This space is ideal for an educational or medical use.

HIGHLIGHTS

- Turn-key educational space
- New construction
- Fully sprinklered
- Roof-deck access

CEILING HEIGHT

11-12 Feet

FRONTAGE

15 feet

CROSS STREETS

Graham and Manhattan Avenues

PRICING & TERMS

Competitive

AVAILABILITY

Immediate

LEASABLE AREA

4,398 SF

TRANSPORTATION



NEIGHBORING TENANTS

The Blue Stove DOMO



For more information, contact exclusive agents:

Peter Schubert
Managing Director
pschubert@terrarcrg.com

Abbie Cheng
Leasing Associate
acheng@terrarcrg.com

Bill Strassman
Leasing Associate
wstrassman@terrarcrg.com

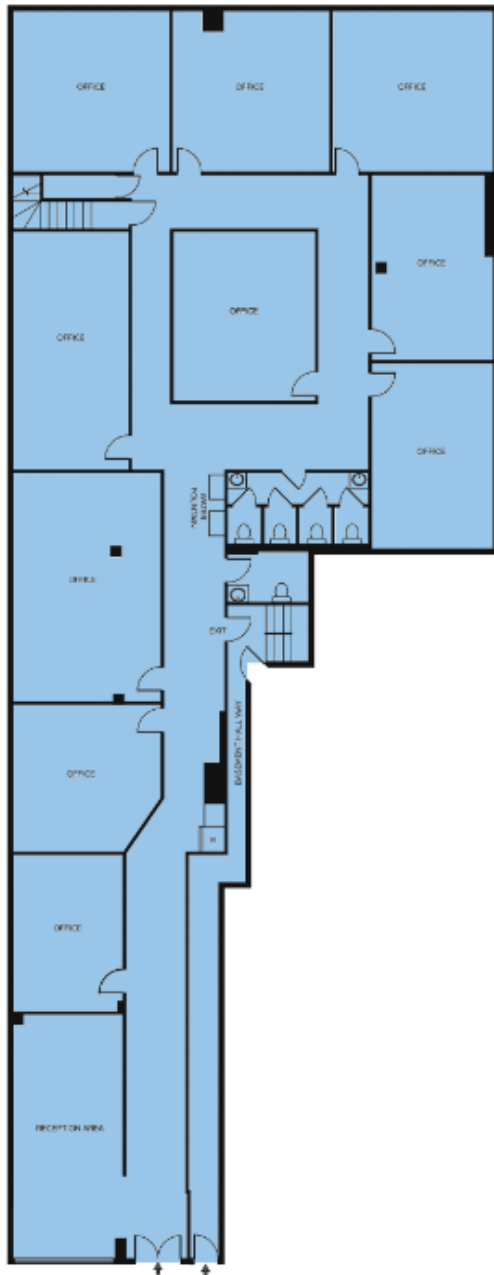
(718) 768-7788
terrarcrg.com

143 SKILLMAN AVE

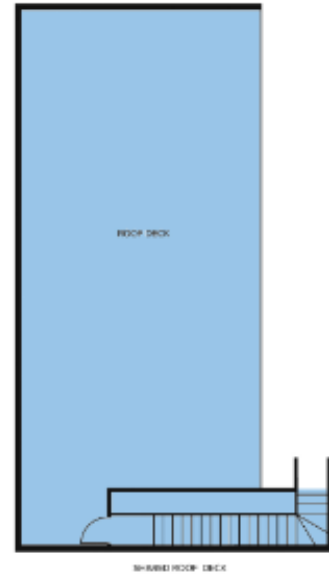
East Williamsburg

Community Facility For Lease
4,398 SF + roof-deck

Ground Floor



Rooftop Patio



For more information, contact exclusive agents:

Peter Schubert
Managing Director
pschubert@terracrgr.com

Abbie Cheng
Leasing Associate
acheng@terracrgr.com

Bill Strassman
Leasing Associate
wstrassman@terracrgr.com

(718) 768-7788
terracrgr.com