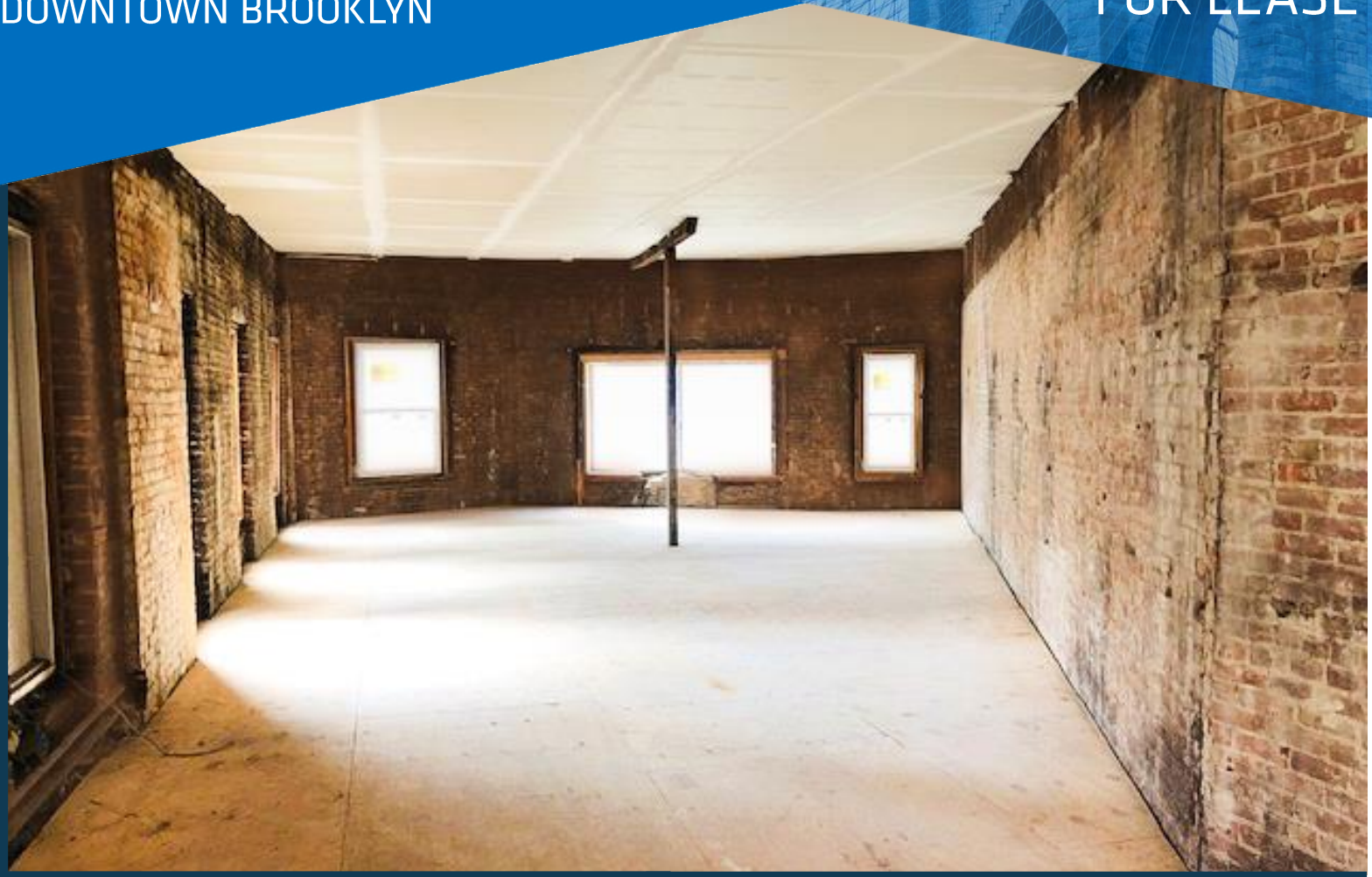


258 DUFFIELD ST

DOWNTOWN BROOKLYN

2,250-4,500 RSF | \$32/RSF
FOR LEASE



HIGHLIGHTS

- Beautiful Exposed Brick & Timber
- Landlord to Build for Move-In Condition - Open Plan
- Heart of Downtown Brooklyn
- Signage Opportunity
- 2nd & 3rd Floor– 4,500 RSF Divisible
- 9-10-foot Ceiling Heights
- Retail on Ground Floor

CROSS STREETS

Fulton St. and Livingston St.

NEIGHBORING TENANTS



Databud Health



MakerBot



For more information, contact exclusive agents:

Caroline Pardo
Managing Director, Office Leasing
cpardo@terracrgr.com
718-355-8942

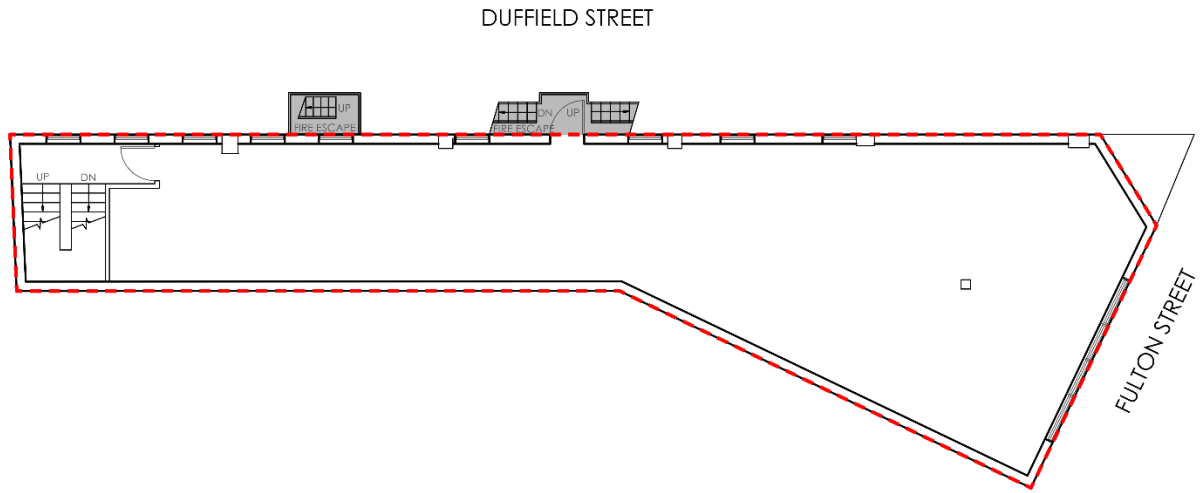
Christopher Havens
Managing Director, Office Leasing
chavens@terracrgr.com
718-489-0077

Micah Hecht
Associate, Office Leasing
mhecht@terracrgr.com
718-489-0077

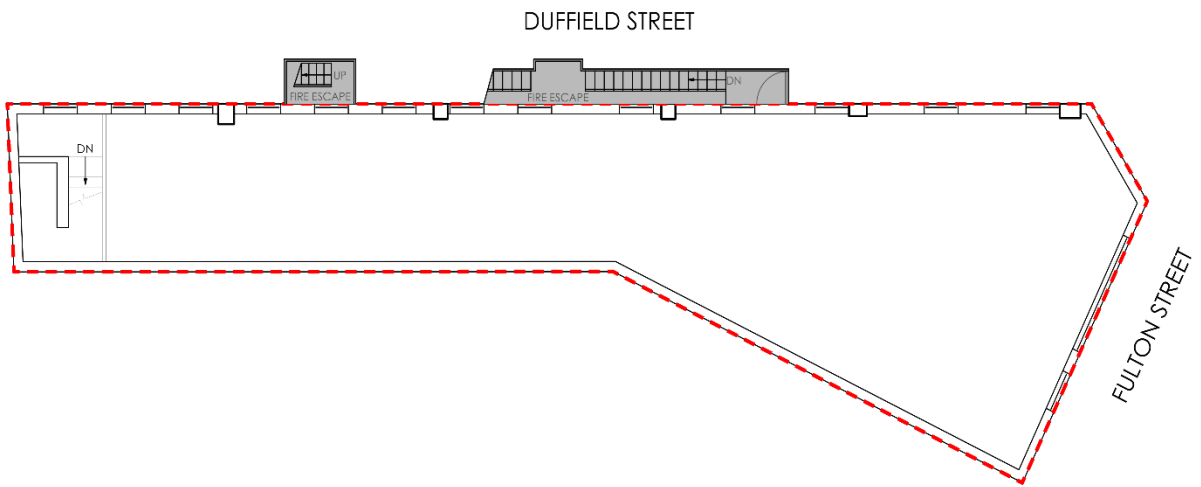
258 DUFFIELD ST

DOWNTOWN BROOKLYN

2,250-4,500 RSF | \$32/RSF
FOR LEASE



 SECOND FLOOR PLAN
SCALE: NTS



 THIRD FLOOR PLAN
SCALE: NTS



For more information, contact exclusive agents:

Caroline Pardo
Managing Director, Office Leasing
cpardo@terracrgr.com
718-355-8942

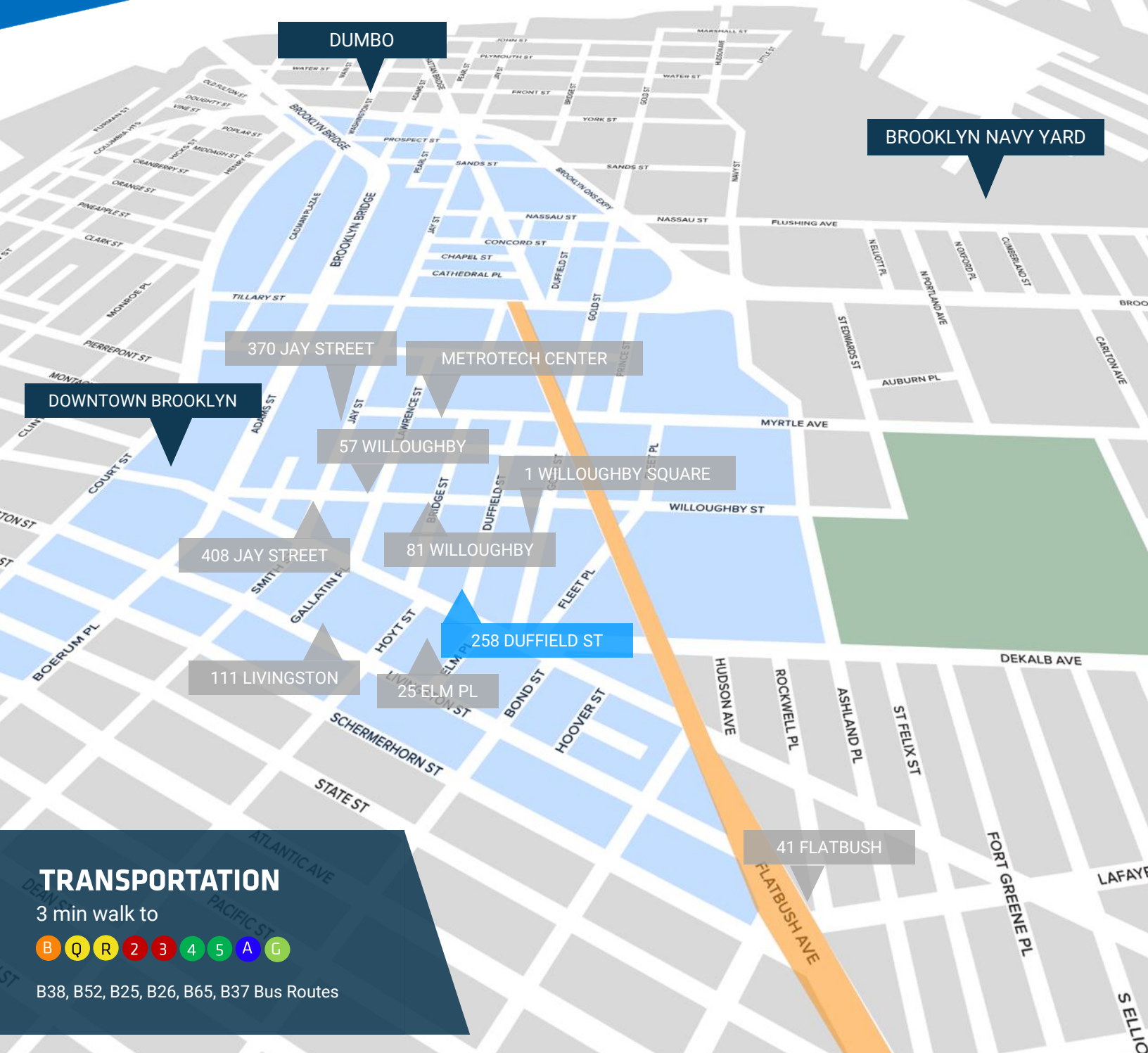
Christopher Havens
Managing Director, Office Leasing
chavens@terracrgr.com
718-489-0077

Micah Hecht
Associate, Office Leasing
mhecht@terracrgr.com
718-489-0077

258 DUFFIELD ST

DOWNTOWN BROOKLYN

2,250-4,500 RSF | \$32/RSF
FOR LEASE



TRANSPORTATION

3 min walk to



B38, B52, B25, B26, B65, B37 Bus Routes

For more information, contact exclusive agents:

Caroline Pardo
Managing Director, Office Leasing
cpardo@terracr.com
718-355-8942

Christopher Havens
Managing Director, Office Leasing
chavens@terracr.com
718-489-0077

Micah Hecht
Associate, Office Leasing
mhecht@terracr.com
718-489-0077