

105 COURT STREET

DOWNTOWN BROOKLYN

1,650 RSF | \$7,500/month
FOR LEASE



SAMPLE OFFICE SHOWN

HIGHLIGHTS

- Downtown Brooklyn business district
- New 1st Class Installation
- Glass conference room/office
- Tenant-controlled HVAC
- New lobby and bike storage coming
- Storage space available
- Bright corner space with two window walls

CROSS STREETS

Corner of Schermerhorn and Court St.

NEIGHBORING TENANTS



For more information, contact exclusive agents:

Christopher Havens

Managing Director, Office Leasing
chavens@terracrgr.com
718-489-0077

Caroline Pardo

Managing Director, Office Leasing
cpardo@terracrgr.com
718-355-8942

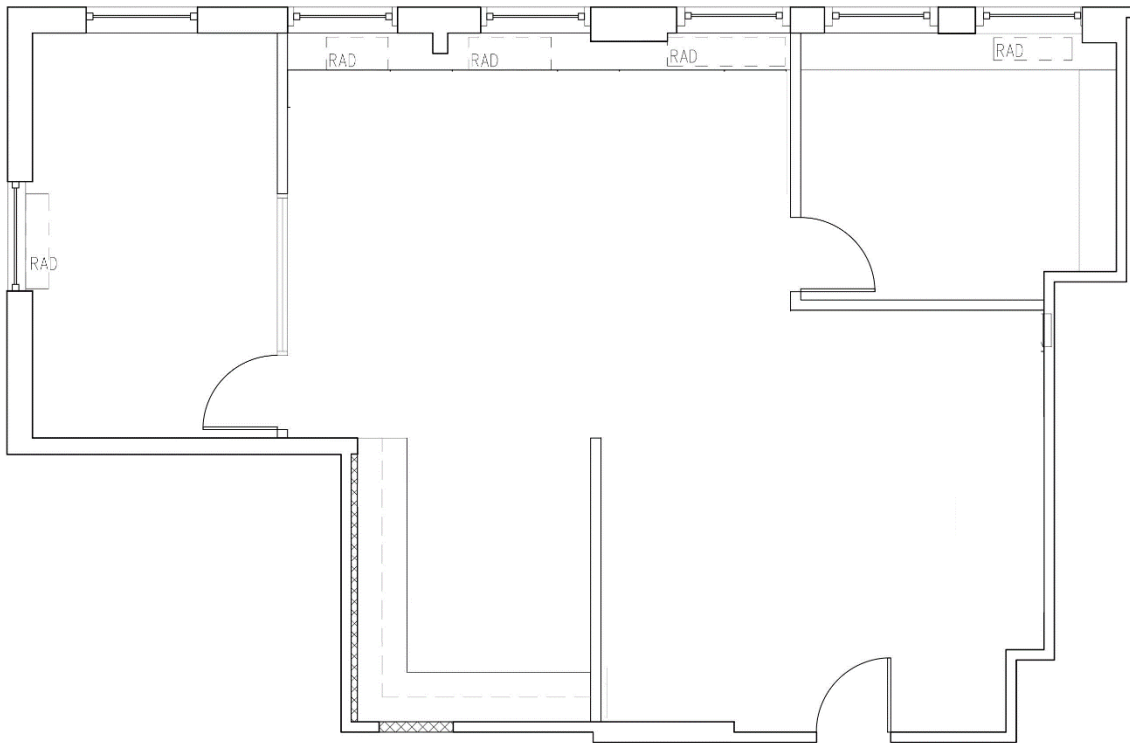
Micah Hecht

Associate, Office Leasing
mhecht@terracrgr.com
718-489-0077

105 COURT STREET

DOWNTOWN BROOKLYN

1,650 RSF | \$55/RSF
FOR LEASE



For more information, contact exclusive agents:

Christopher Havens

Managing Director, Office Leasing
chavens@terraarg.com
718-489-0077

Caroline Pardo

Managing Director, Office Leasing
cpardo@terraarg.com
718-355-8942

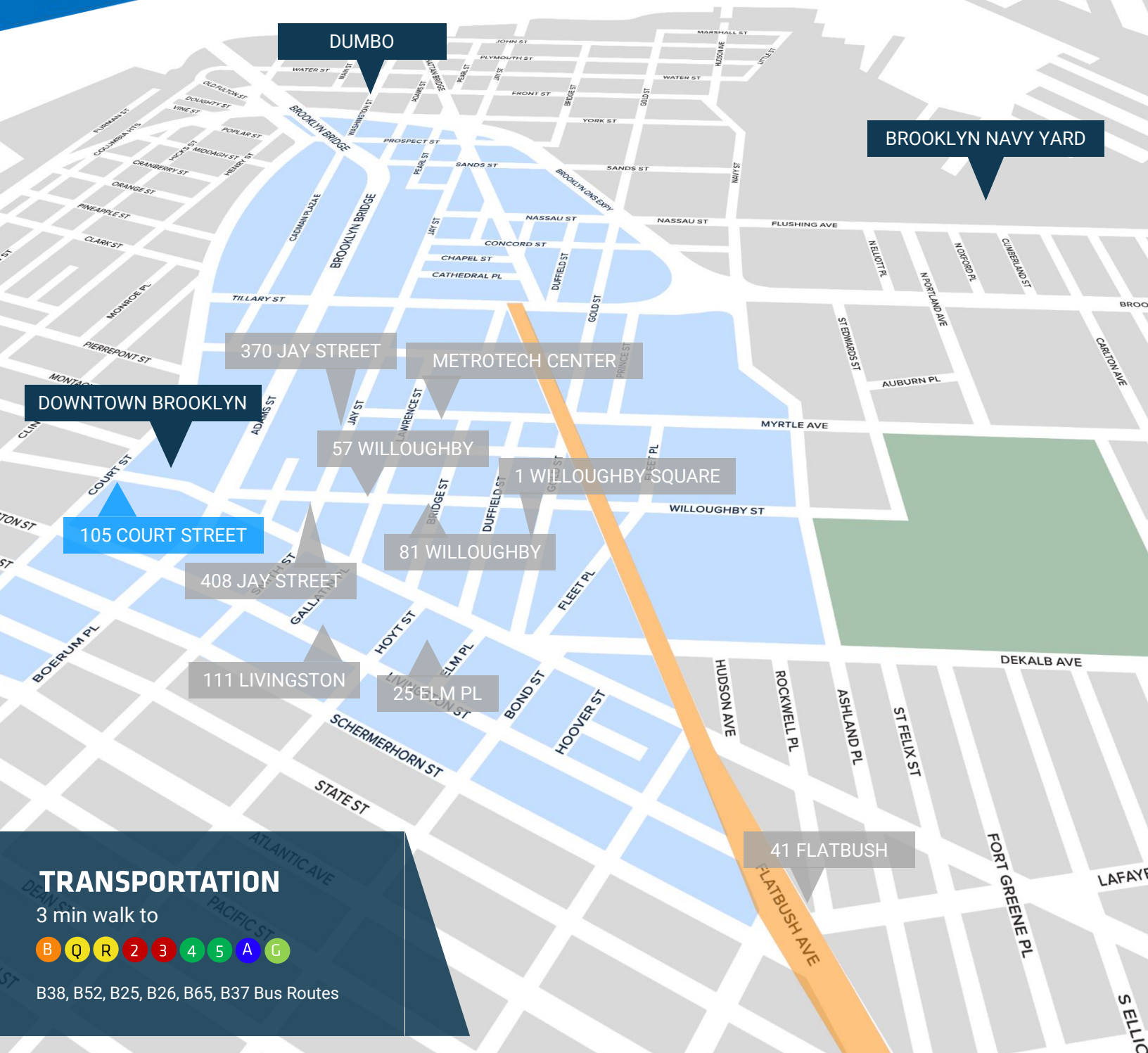
Micah Hecht

Associate, Office Leasing
mhecht@terraarg.com
718-489-0077

105 COURT STREET

DOWNTOWN BROOKLYN

1,650 RSF | \$55/RSF
FOR LEASE



TRANSPORTATION

3 min walk to



B38, B52, B25, B26, B65, B37 Bus Routes

For more information, contact exclusive agents:

Christopher Havens

Managing Director, Office Leasing
chavens@terracrg.com
718-489-0077

Caroline Pardo

Managing Director, Office Leasing
cpardo@terracrg.com
718-355-8942

Micah Hecht

Associate, Office Leasing
mhecht@terracrg.com
718-489-0077

