

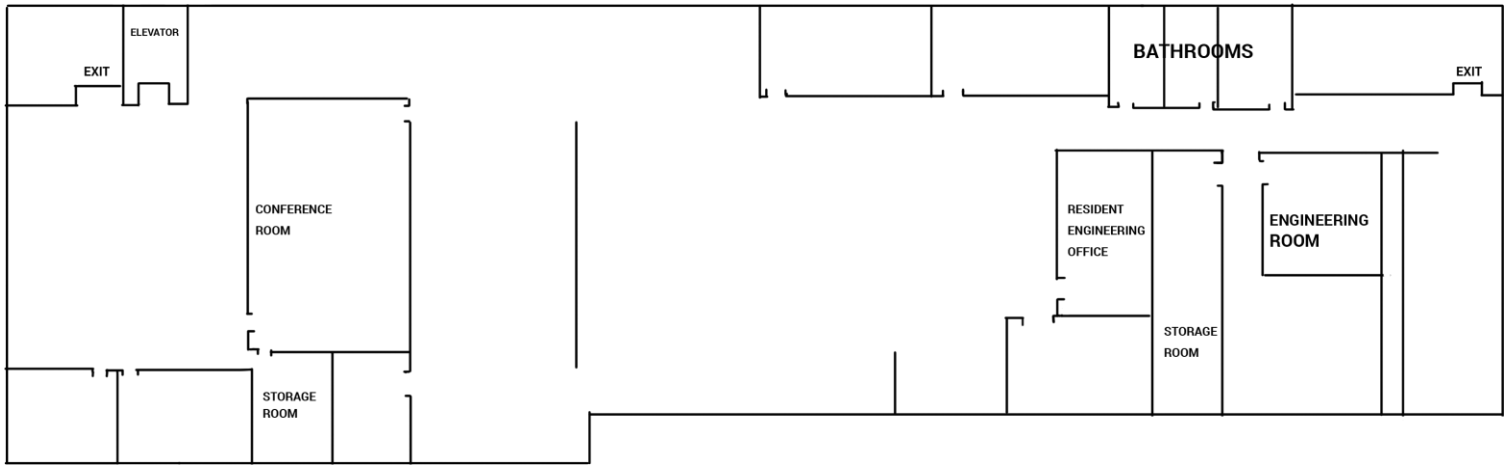
951 3RD AVENUE

SUNSET PARK | BROOKLYN

9,000 RSF | \$29/RSF ASK
FOR LEASE



951 3RD AVENUE



2ND FLOOR – FLOOR PLAN

HIGHLIGHTS

- High Ceilings
- Full Floor
- Private bathrooms
- Private entrance
- Pantry
- Private Parking Space
- Signage Opportunity

CROSS STREETS

36th Street & 37th Street



For more information, contact exclusive agents:

Caroline Pardo
Managing Director, Office Leasing
cpardo@terraarg.com
718-355-8942

Christopher Havens
Managing Director, Office Leasing
chavens@terraarg.com
718-489-0077

Micah Hecht
Associate, Office Leasing
mhecht@terraarg.com
718-768-6888

951 3RD AVENUE

SUNSET PARK | BROOKLYN

9,000 RSF | \$29/RSF ASK
FOR LEASE



NEIGHBORING TENANTS



THE NEIGHBORHOOD

Sunset Park is a diverse neighborhood that features busy avenues with a number of shops and restaurants. Industry City, an industrial complex spanning over 35-acres on the waterfront, hosts dozens of food vendors, retail stores and creative events throughout the year. Industry City and its next-door neighbor, Costco, attract people from all around the city on the weekends.

TRANSPORTATION

3 min walk to **D N R**

Citibike 

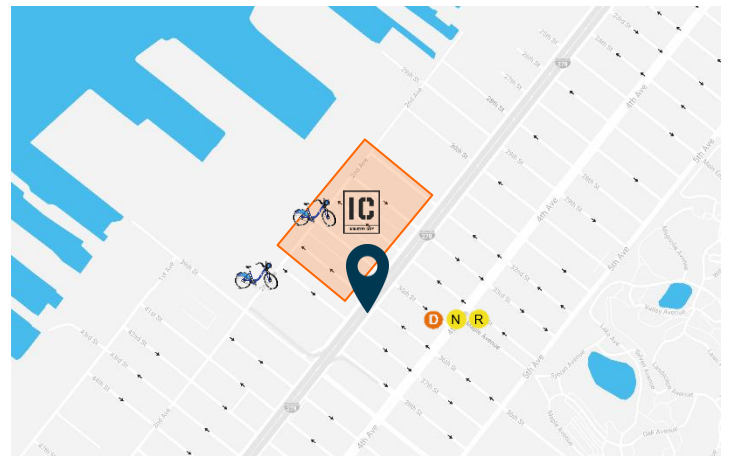
Car-2-Go – Car Share 

B37, B70

Downtown Brooklyn, Union Square, Financial District 5 minutes (1 Stop from Atlantic Terminal) on the D/N Train to Industry City

20 minute ride on a private shuttle to Industry City 20 minutes (3 stops) on the N Train to Industry City

AREA MAP



For more information, contact exclusive agents:

Caroline Pardo
Managing Director, Office Leasing
cpardo@terraarg.com
718-355-8942

Christopher Havens
Managing Director, Office Leasing
chavens@terraarg.com
718-489-0077

Micah Hecht
Associate, Office Leasing
mhecht@terraarg.com
718-768-6888