

10 HANOVER PLACE

DOWNTOWN BROOKLYN

18,057 RSF | \$27.50/RSF
FOR LEASE



HIGHLIGHTS

- Flexible lease terms
- In the heart of Downtown Brooklyn
- Boutique Offering
- As-Is
- Exposed 10+ ceilings
- Available space: 7,000-40,000 RSF
- Brooklyn Tech Triangle

CROSS STREETS

Fulton St. and Livingston St.

NEIGHBORING TENANTS



fxcollaborative

Gimlet



For more information, contact exclusive agents:

Caroline Pardo
Managing Director, Office Leasing
cpardo@terracrgr.com
718-355-8942

Christopher Havens
Managing Director, Office Leasing
chavens@terracrgr.com
718-489-0077

Micah Hecht
Associate, Office Leasing
mhecht@terracrgr.com
718-489-0077

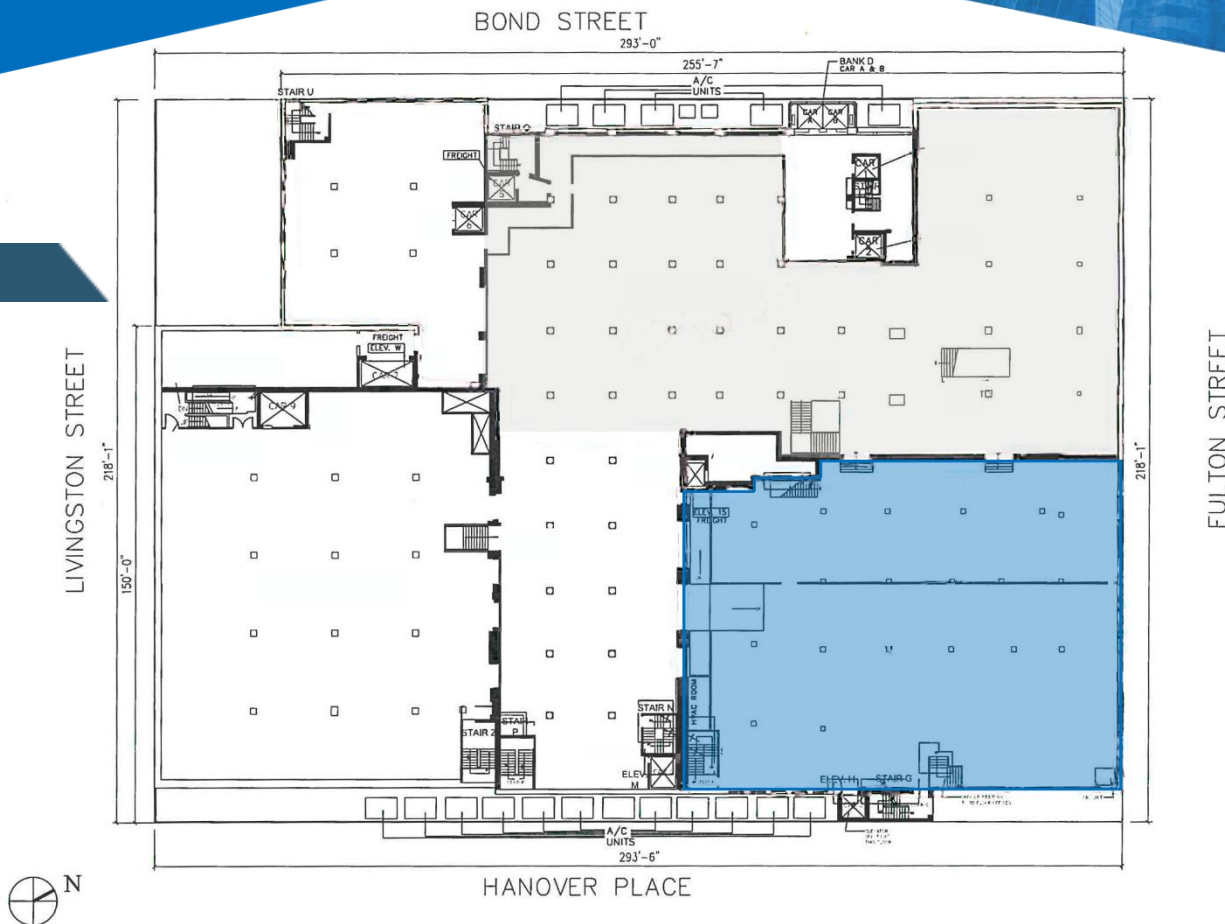
10 HANOVER PLACE

DOWNTOWN BROOKLYN

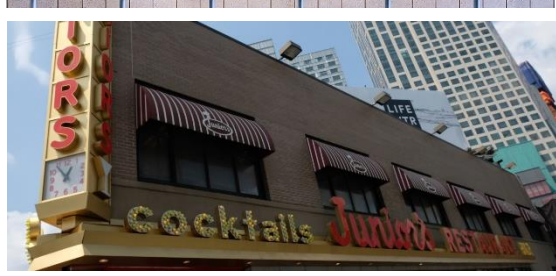
18,057 RSF | \$27.50/RSF
FOR LEASE

18,057 RSF

SECOND FLOOR



1 SECOND FLOOR PLAN
FL2 1/16" = 1'



For more information, contact exclusive agents:

Caroline Pardo
Managing Director, Office Leasing
cpardo@terraarg.com
718-355-8942

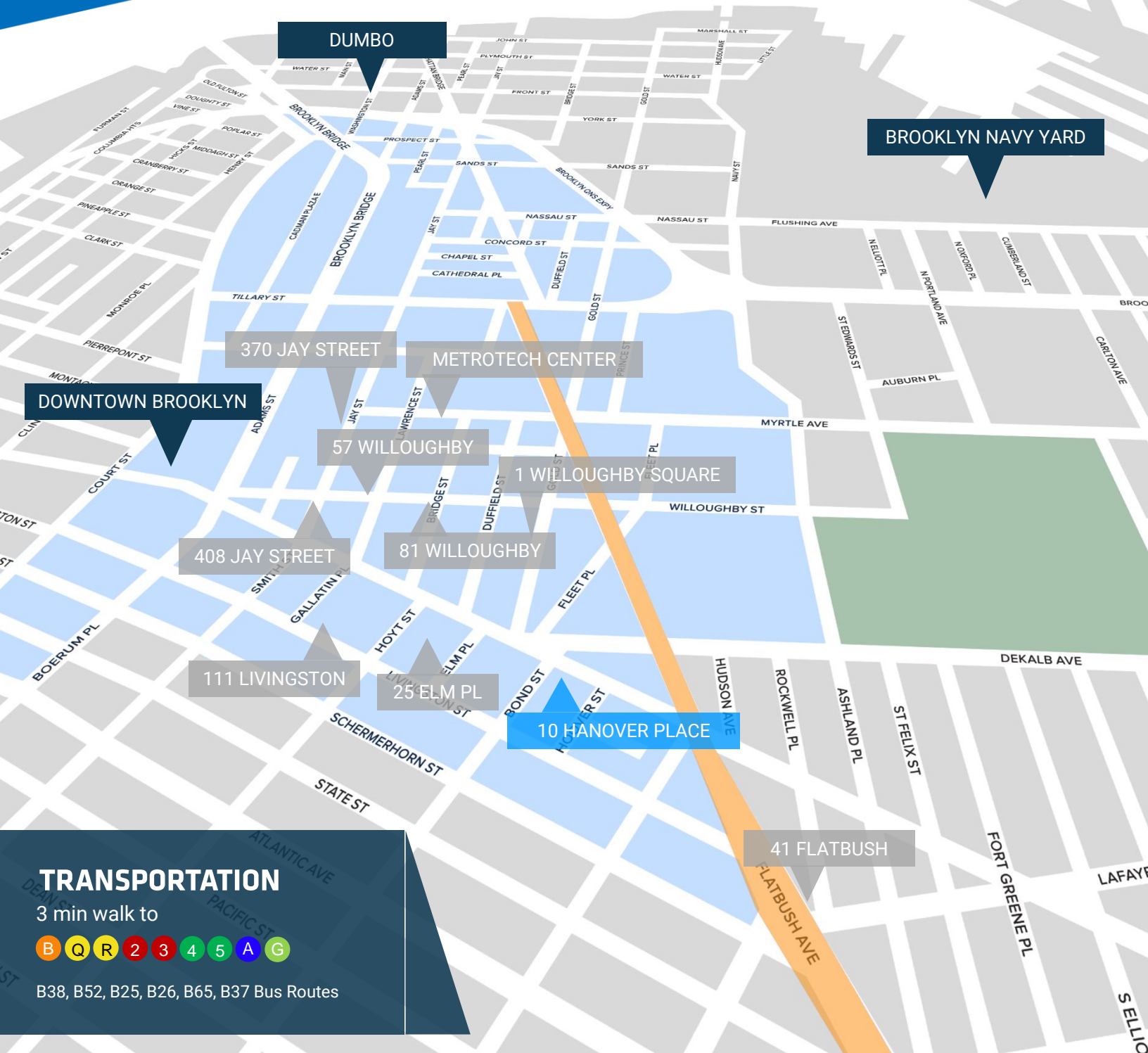
Christopher Havens
Managing Director, Office Leasing
chavens@terraarg.com
718-489-0077

Micah Hecht
Associate, Office Leasing
mhecht@terraarg.com
718-489-0077

10 HANOVER PLACE

DOWNTOWN BROOKLYN

18,057 RSF | \$27.50/RSF
FOR LEASE



TRANSPORTATION

3 min walk to



B38, B52, B25, B26, B65, B37 Bus Routes

For more information, contact exclusive agents:

Caroline Pardo
Managing Director, Office Leasing
cpardo@terracr.com
718-355-8942

Christopher Havens
Managing Director, Office Leasing
chavens@terracr.com
718-489-0077

Micah Hecht
Associate, Office Leasing
mhecht@terracr.com
718-489-0077

