

1192 Bedford Avenue | Retail For Lease

Bedford Stuyvesant | 760 SF



TERRACRG
COMMERCIAL REALTY GROUP



ADDRESS

1192 Bedford Avenue
Brooklyn, NY 11216

HIGHLIGHTS

- New Construction
- Luxury Condos Above
- Rear yard
- High traffic

NEIGHBORHOOD

Bedford Stuyvesant

CROSS STREETS

Jefferson & Putnam Avenue

POSSESSION

Immediate

GROSS LEASEABLE AREA

760 on Ground Floor
530 SF in Lower Level

FRONTAGE

7 Feet on Bedford Avenue

CEILING HEIGHTS

11 Feet on Ground Floor
9 Feet in Lower Level

PRICING & TERMS

Upon Request

NEIGHBORING TENANTS

Sushi Tatsu
Bedford Hall
Bombay Grill
Napoleon Southern Cuisine

TRANSPORTATION



For more information, contact exclusive agents:

Peter Schubert

Managing Director of Commercial Leasing
pschubert@terraarg.com

Joseph Terzi

Associate
jterzi@terraarg.com

(718) 768-7788

terraarg.com

1192 Bedford Avenue | Retail For Lease

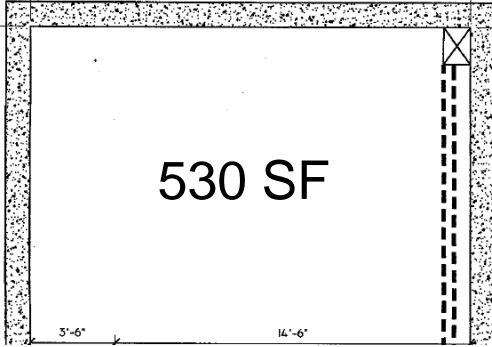
Bedford Stuyvesant | 760 SF



TERRACRG
COMMERCIAL REALTY GROUP

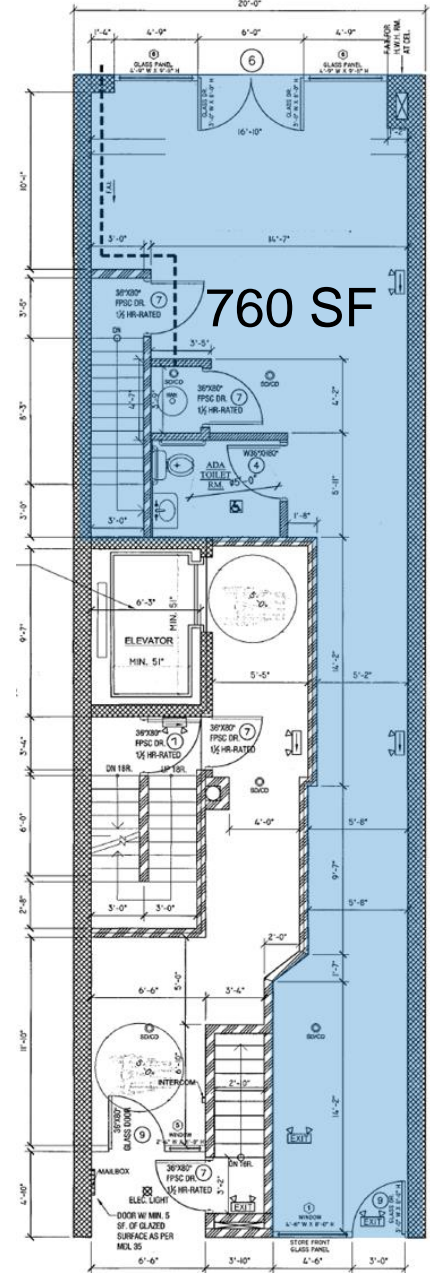
FLOOR PLANS

Cellar



Bedford Avenue

Ground Floor



The information provided herein has either been given to us by the owner of the property or was obtained from sources we deem reliable. We do not guarantee the accuracy of any information. All zoning, existing square feet of buildings, available buildable square feet, permitted uses and any other information provided herein must be independently verified. The value of any real estate investment is dependent upon a variety of factors including income, vacancy rates, expense estimates, tax brackets and general market assumptions, all of which should be evaluated by your tax advisor and/or legal counsel. Prospective buyer and tenants should carefully verify each item of information herein.

For more information, contact exclusive agents:

Peter Schubert
Managing Director of Commercial Leasing
pschubert@terraarg.com

Joseph Terzi
Associate
jterzi@terraarg.com

(718) 768-7788
terraarg.com